

# TWERTON INFANT SCHOOL & NURSERY



Excel at Twerton  
- the school that cares

## Monday 8<sup>th</sup> February 2016

Ofsted  
GRADED  
GOOD



**Children's  
Mental Health  
Week 2016**

8-14 February #childrensmhw  
ChildrensMentalHealthWeek.org.uk

Ofsted  
Outstanding  
Early years provider

2014|2015

[www.twerton-infant-school.co.uk](http://www.twerton-infant-school.co.uk)

[www.twitter.com/twerton\\_infants](http://www.twitter.com/twerton_infants)

[www.facebook.com/twertoninfants](http://www.facebook.com/twertoninfants)



# Dear Parents and Carers,



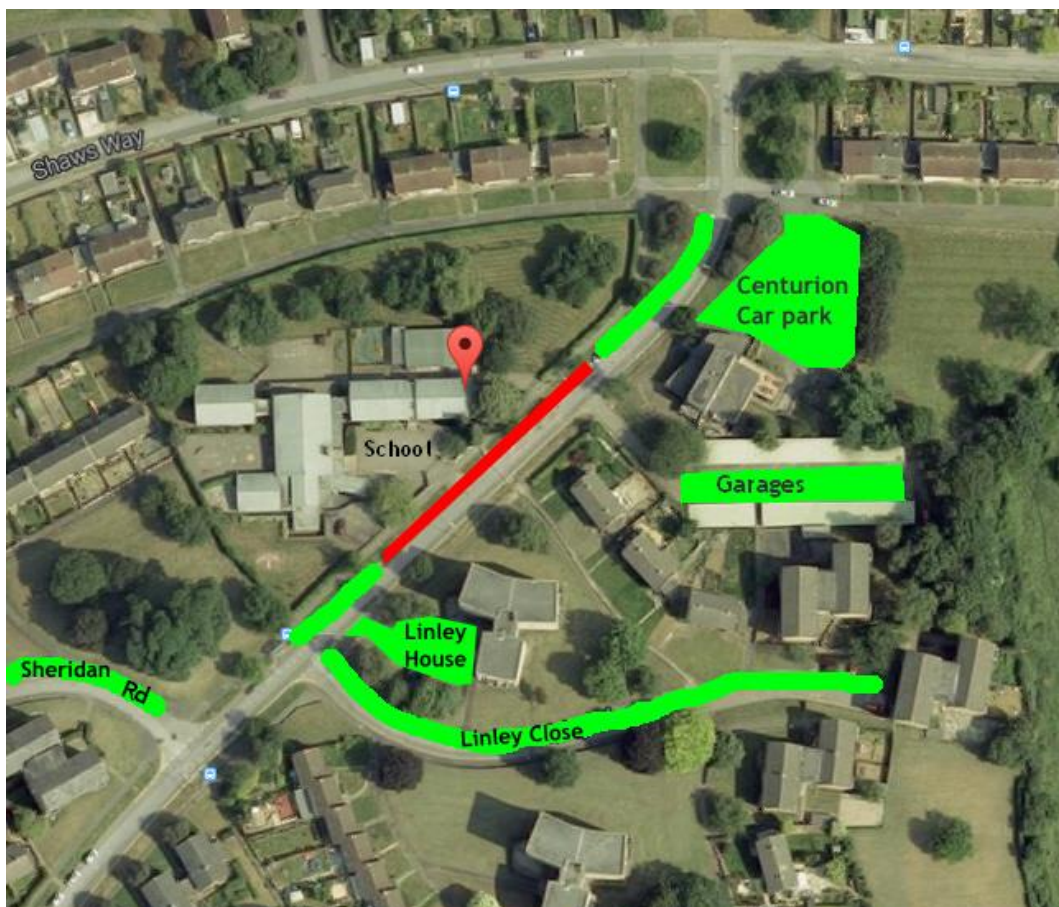
## Yellow Lines & Morning Drop-Off

When cars park on the yellow zigzag lines outside the school and nursery it becomes much more dangerous for children to cross the road.

Parents have recently reported a number of 'near misses' caused by thoughtless parking and careless driving. In November 2015, we advised parents that the police have requested that we pass on the registration-plate details of any cars that park on the yellow lines.

Whilst we regret needing to do this, it is vital that the parking situation improves for the safety of children. There is usually plenty of space to park further down the hill and the landlord at the Centurion kindly allows parents to use the pub's carpark for dropping off (see **green** on map below).

**Please help to keep all our children safe and DO NOT park on the yellow zig-zags or double yellow lines. The details of any cars parked illegally will be passed on to the Police.**



A big **“Thank You”** to all parents and carers and who do park safely.

## Fridays are our **Fun Reading In-school DAYs**

Our first Friday morning with parents reading in class with their children was a huge success (5/2/16). We really appreciate parents' support with this important activity but we are aware that not all parents can make every Friday morning. So this coming Friday, please do consider staying a few minutes longer to listen to another child read too.



We want to be a school of Remarkable Readers and Mrs Patterson is keen that everyone in the school gets involved. Look out for news of what the teachers, TAs, SMSAs and office staff are currently reading on the noticeboards outside the classrooms.

## What's SPaG?

From May this year, all Year 2 children across the county will be tested in **Spelling, Punctuation** and **Grammar**. We will be holding a Workshop for parents and carers to tell you more about this.



- Do you know the difference between a **statement**, a **command** and a **question**?
- Can you tell an **adverb** from an **adjective**?

Please come along to find out more from Mrs Phillips and Mrs Kinnear on:

Friday 26<sup>th</sup> February at 2.15pm

*In Classroom 3*

*Open to all parents in Year 1 and Year 2*

## Holidays and Term-time leave

There are **13 weeks** in the year when families are able to plan and enjoy holidays. If you wish to take your child on holiday during term time you need to apply for permission in advance of the holiday and permission will only be granted in exceptional circumstances.

BANES Council are very clear on the guidance to parents and schools, please click the link to find out: <http://tinyurl.com/jb63fkb>

**Bath & North East  
Somerset Council**

# Dates for your Diary

Monday 8<sup>th</sup> February – **Creative Construction Club** (3.15pm to 4.15pm)

Monday 8<sup>th</sup> February – **Photography Club** (3.15pm to 4.15pm)

Tuesday 9<sup>th</sup> February – **Shrove Tuesday** (Pancake Day)

Thursday 11<sup>th</sup> February – **Science Club with Chemical Cress** (3.15pm to 4.10pm)

Friday 12<sup>th</sup> February – **Maple Class Assembly** at 2.00pm.

*Parents of children in Maple Class are warmly invited to attend.*

Friday 12<sup>th</sup> February – **Gymnastics Club**(3.15pm to 4.00pm)

---

Friday 12<sup>th</sup> February – **End of Term 3**

Monday 22<sup>nd</sup> February – **INSET Day 4 – Closed for Staff Development**

Tuesday 23<sup>rd</sup> February – **Start of Term 4 for children**

Friday 26<sup>th</sup> February – **SPaG Workshop** – 2.00pm

Friday 26<sup>th</sup> February – **Attendance Assembly**

Thursday 3<sup>rd</sup> March – **World Book Day**

Thursday 17<sup>th</sup> March – **Parents Evening** – 3.15pm to 6.30pm

Tuesday 22<sup>nd</sup> March – **Parents Evening** – 3.15pm to 5.45pm

Thursday 24<sup>th</sup> March – **End of Term 4**

---

Friday 25<sup>th</sup> March – **Good Friday** (school closed)

Monday 28<sup>th</sup> March – **Easter Monday** (school closed)

Tuesday 29<sup>th</sup> March to Friday 8<sup>th</sup> April – **Easter Holidays** (school closed)

---

Monday 11<sup>th</sup> April – **Start of Term 5**

Monday 2<sup>nd</sup> May – **Bank Holiday** (school closed)

Friday 27<sup>th</sup> May – **End of Term 5**

**N.B. Please do check the school website for term dates before booking holidays.**

<http://www.twerton-infant-school.co.uk/cms3/drupal-6.24/?q=node/20>

## Please Keep in Touch

If your child is unwell and is not able to attend school, you can send the school a text message to let us know and to explain the reason for their absence.



The number to text the school is: **07860 030358**

Office telephone number: **01225 423526**

Please remember that it is your responsibility to contact the school when your child is not able to attend school.



**Twertoninfantschool**



**@Twerton\_Infants**